

Instructions

Roaster Blower Replacement

All Sonofresco Coffee Roaster Models

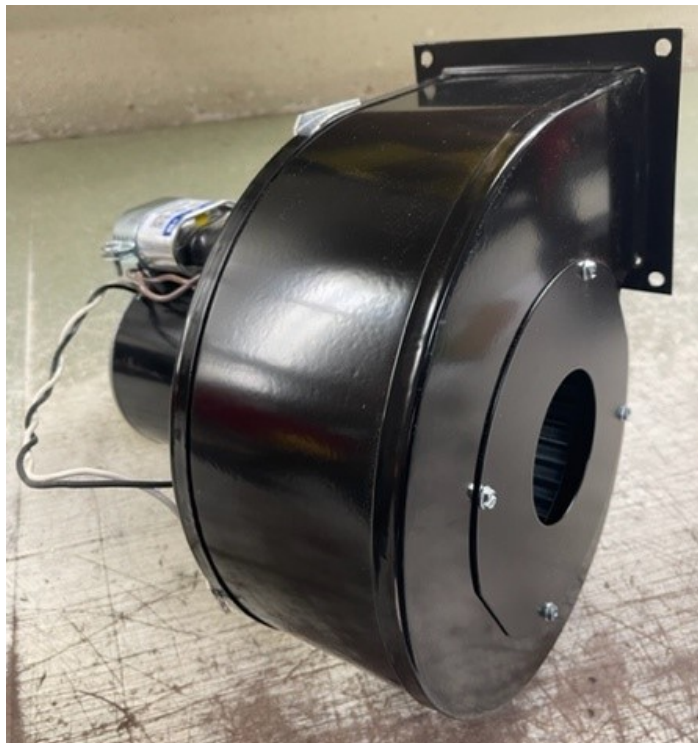


The following instructions guide is for replacing the blower in a Sonofresco Roaster.

PLEASE READ ALL INSTRUCTION BEFORE PROCEEDING

Tools needed:

- Adjustable wrench
- #2 Phillips screwdriver
- 7/16 socket and ratchet
- Small flat blade screwdriver



1. Preparation

CAUTION:

Failure to following these instructions could lead to appliance damage, personal injury, or even death.

Fully read and understand these instructions before performing any work.

Disconnect power to the roaster.



Turn off gas supply and disconnect gas line from to the roaster.



2. Remove Outer Casings

Accessing the blower requires removing the chrome top plate, control board screws, lift handle, back panel and outer casing.

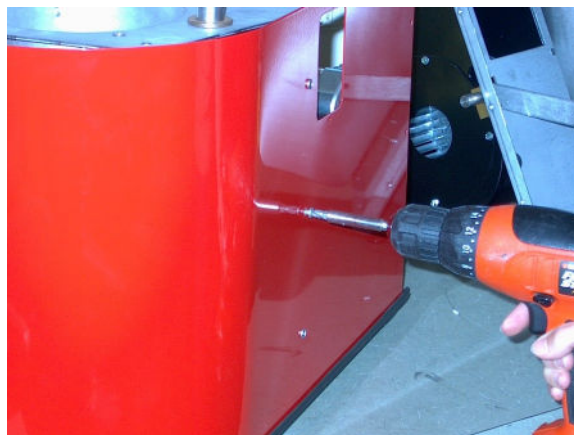
Remove six (6) screws from top plate.



Remove lift handle by removing the inner set screw using a 1/8" Allen hex wrench.



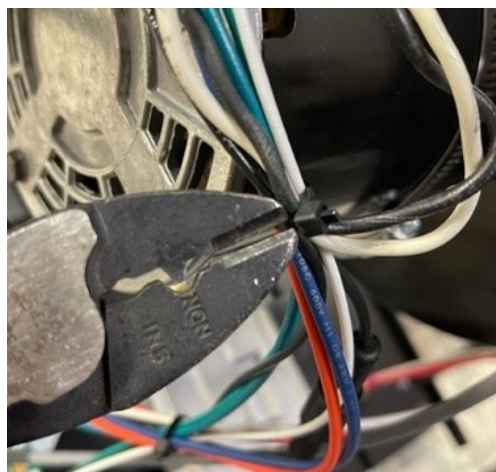
- Remove twelve screws from u-shape using Phillips screwdriver.
- Remove screws that secure the back panel.
- Remove two (2) screws to disconnect the control board.
- The control board will not be removed from wiring harness.



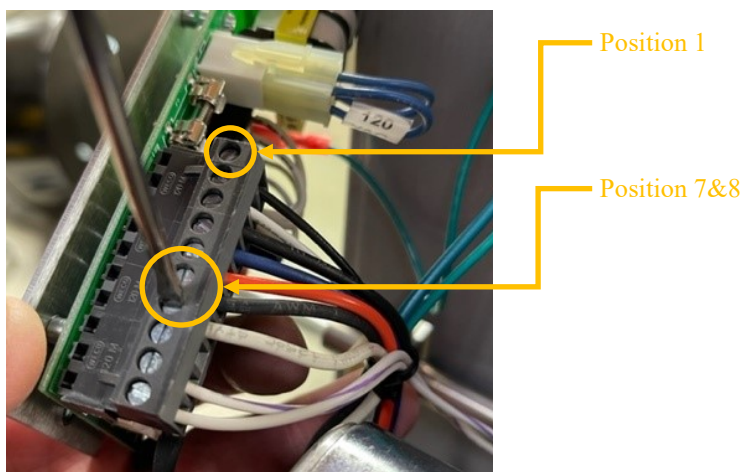
3. Remove Blower

Removing the blower requires clipping the wiring harness wire ties, disconnecting the wires from the control board connectors, and removing 4 nuts that hold the blower in place. Installation is in reverse order.

Clip wire ties (2x)



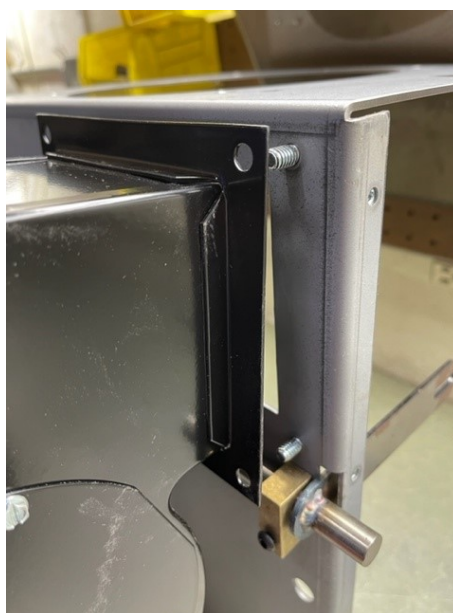
Remove black and White blower wires from the control board connector position 6 & 7.



Remove mounting nuts with 7/16 socket wrench (4X)



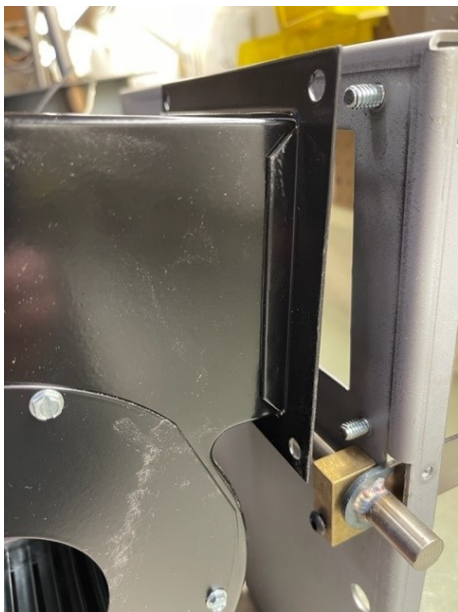
Remove the blower from mounting studs.



4. Replace Blower

Replace the blower in reverse order, starting with placing the blower on the mounting studs, installing mounting nuts, and tighten all four. The mounting nuts should be tight, but do not need to be over torqued.

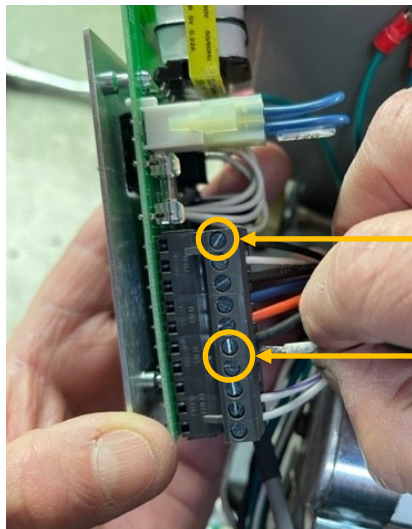
Align blower flange to mounting studs



Tighten mounting nuts (4X)



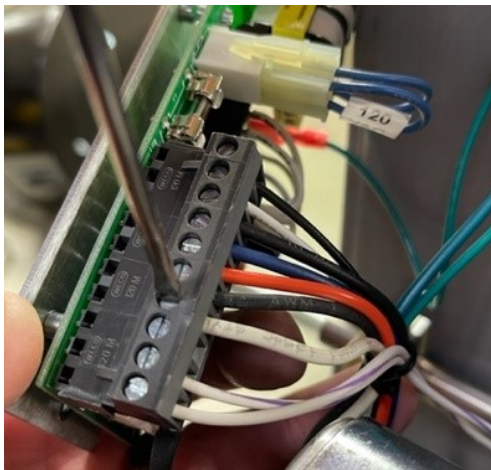
Insert black and White blower wires into the control board connector position 6 &7.



Position 1

Position 7&8

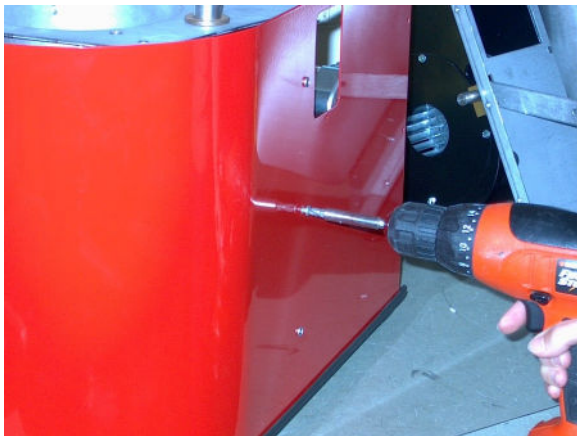
Tighten tension screws and ensure a solid connection by applying a pull test.



5. Install Outer Casings

Accessing the blower requires removing the chrome top plate, control board screws, lift handle, back panel and outer casing.

- Starting with the left hand side of the roaster, install the outer casing by sliding into the lower extrusion.
- Once the outer casing is inserted into the left side of the bottom extrusion and about a third of the way around the front, install the screws on the left side first. (This will prevent the casing from popping out when working the right hand side).
- Continue inserting the casing into the extrusion working around the front to the right side.
- Install the remainder of the screws to secure the casing.



Install (6) screws and tight to secure the top plate top plate. Install the back



Install lift handle by tightening the inner set screw with an 1/8" Allen hex wrench.



6. Finishing Up

Finish up by attaching the gas line and power cord.

Install and tighten gas line.



Reconnect power to the roaster.

